



LANDSHARK™

One-Runner Professional Series Sulky



Owner's Manual

555 Goodrich Rd
Bellevue, OH 44811

419-483-9918

419-483-8128 fax

www.selbro.com

Salesinfo@selbro.com

SELBRO
INCORPORATED *a PoweQuip Company*



We would like to thank you for your purchase of our professional grade sulky, noted by landscape professionals as one of the best in the industry. Your unit was fabricated and assembled using quality parts and heavy gauge steel materials in our Bellevue, Ohio facility. This unit, when properly maintained, should provide years of useful life.

Your LandShark Team

Contents

	Section	Page
1. Safety		3
2. Assembly/Installation		4
3. Maintenance/Storage		6
4. Parts Breakdown Diagram		7
5. Parts List		8



Safety

1. Read, understand and follow all mower manufacturer's operation and safety instructions. You should be completely familiar with all the safety controls and how to safely start and stop your mower. Know the location and function of all operator presence controls that automatically shut the mower off when you release the handles.
2. Use the equipment at slow speeds until you become completely familiar with both the mower and sulky and how they react together.
3. Check the area before mowing with a sulky. Be aware of any holes, drop-offs, tree limbs, rocks or other ground obstructions as the sulky swings, turns and moves up and down over the terrain.
4. Never carry passengers.
5. Do not operate any sulky under the influence of drugs or alcohol.
6. Wear sturdy rough soled shoes. Never operate or use a sulky with bare feet or in sandals.
7. Mowing or using a sulky on slopes requires additional caution.
8. Use slow speeds. Do not make sudden changes in speed or direction. Quick acceleration or braking could cause the mower to lift, shift sideways or slide, which may result in injury.
9. Avoid starting or stopping on hillsides.
10. Do not turn on slopes.
11. Do no operate sulky on wet grass.
12. Use extra care with loading or unloading mower from trailer. **Do Not Ride Sulky When Loading or Unloading.**
13. Never operate sulky with inspection plate open.

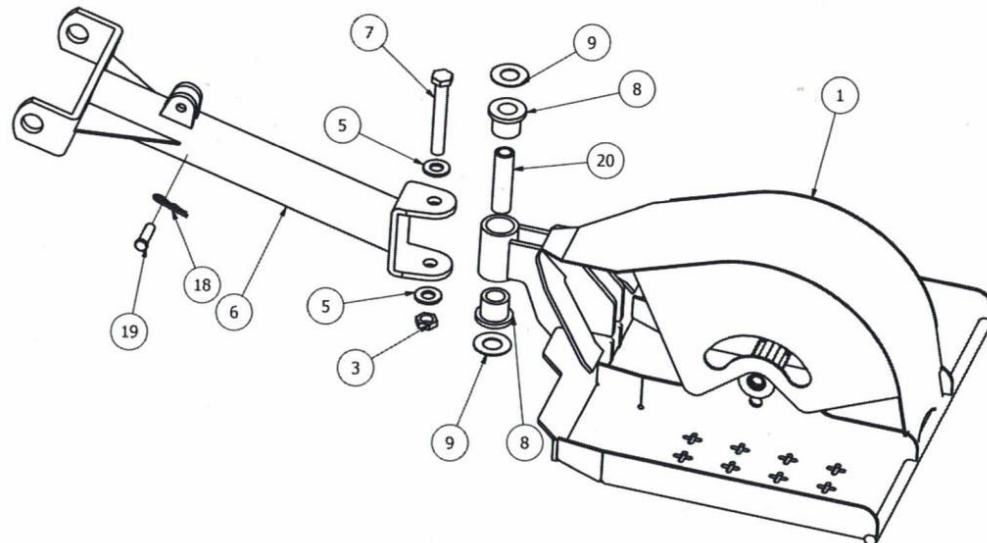


Assembly

Attention: Failure to grease the wheel assembly and pivot points on a daily basis will void the warranty and significantly decrease the useful life of your sulky.

Assembly/Installation

1. Tow Arm Assembly (sulky side)
 - a. Place the pivot tube spanner (20) into pivot tube. Spanner will protrude slightly on top and bottom.
 - b. Insert pivot tube spacers (9) on top and bottom of spanner.
 - c. Install tow arm tube assembly making sure the angle of the arm will face upward toward the rear of the mower and insert pivot bolt (7) using pivot washers (5) and jam nut (3).
 - d. Tighten pivot bolt until tow arm clevis is securely drawn down to the pivot spanner. Be careful not to pinch the pivot tube spacer between t

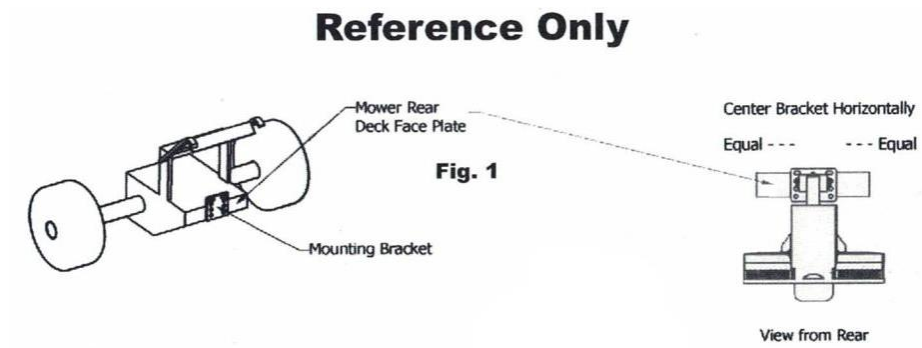


d spanner.

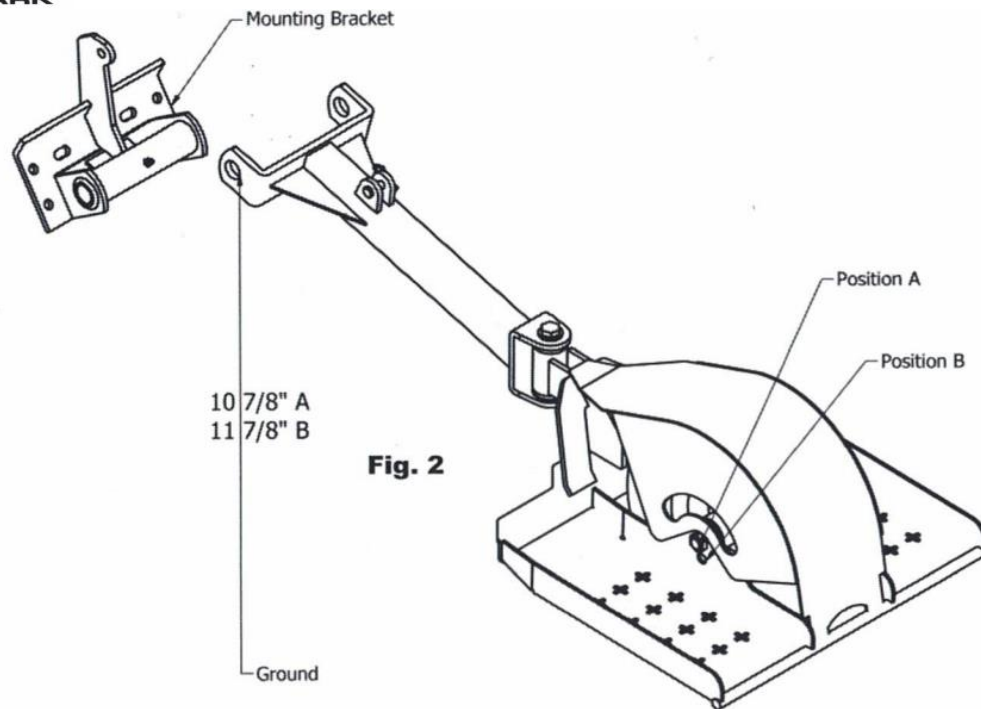


2. Bracket Installation

- a. Disengage the mower PTO, make sure the engine is off. Remove the ignition key to prevent accidental starting.
- b. As illustrated in Figure 1, the mounting bracket is designed to be mounted horizontally centered on the mower rear deck faceplate.



- c. The bracket pivot pin vertical dimension should be maintained between 10 7/8 inches and 11 7/8 inches from the ground per Figure 2.



- i. Clamp the bracket to the rear deck faceplate and center both horizontally and vertically.
- ii. Check the sulky platform for level and adjust as necessary.
- iii. With bracket securely clamped in place, mark and drill holes using a 3/8 inch drill bit. (Check behind deck plate for any obstructions ie: belts, pulleys, hoses, etc.)
- iv. Securely bolt the bracket in place using hardware supplied. It is suggested that all four bolts be used to secure the mounting bracket. Bolts may be faced outward as necessary.
- v. As a reminder, grease all points thoroughly and often!

Maintenance/Storage

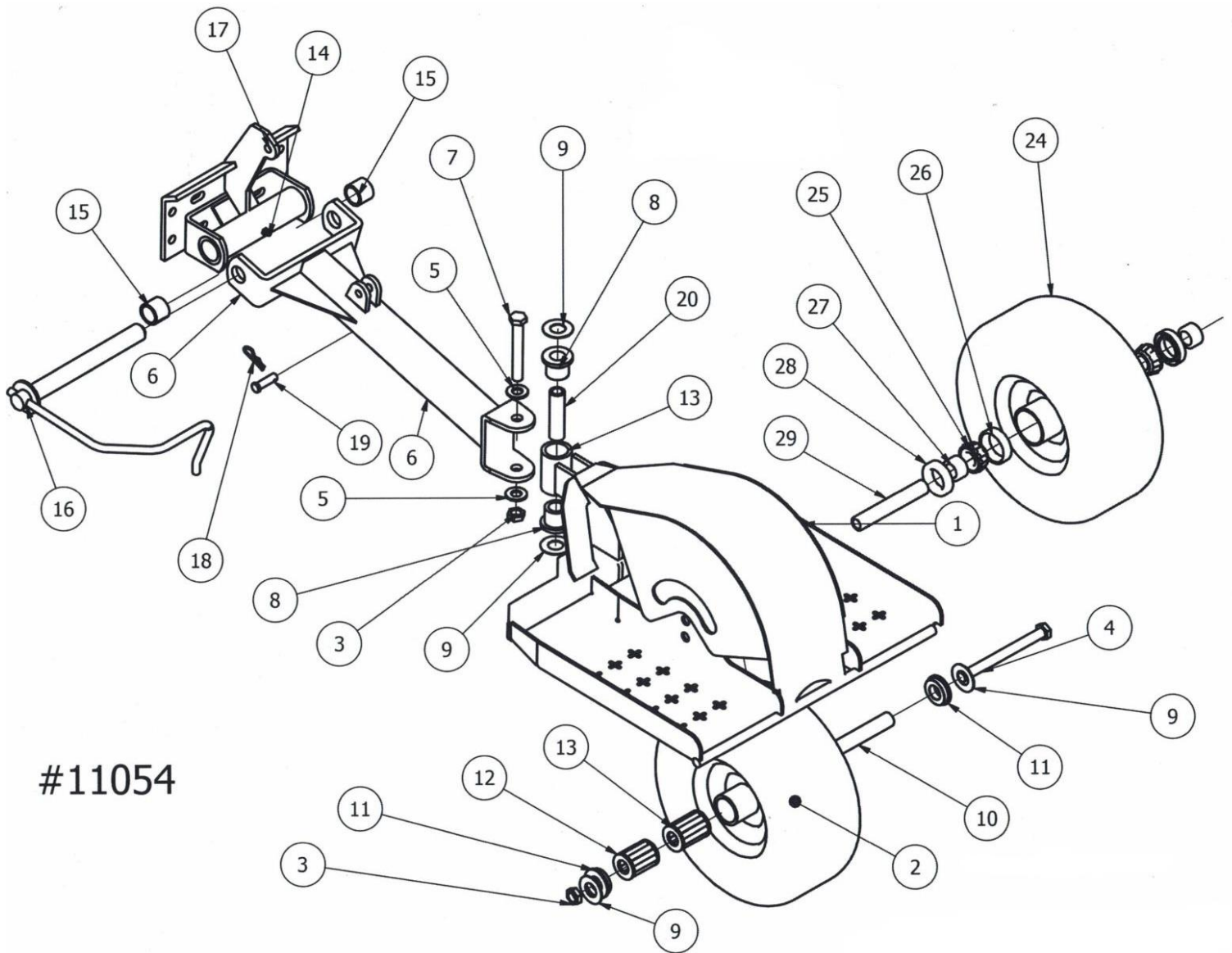
1. It is very important to grease all points often. This will extend the life of the wheel assembly and all pivot components.



2. Our sulky includes a patented wheel inspection door that allows for easy clean out of the wheel fender. Proper care here will extend the life of the wheel assembly.
3. The sulky is equipped with a clevis pin (19) that allows the sulky to be raised for storage during loading and unloading the mower from a trailer.
4. To store, raise the sulky and use the clevis pin to lock the unit in the upright position.



Parts Breakdown Diagram



#11054



Parts List

Item	Qty	Part Number	Description
1	1	11050	Complete Deck Assembly
2	1	11038FF / 11041	Wheel Assembly Flat Free (includes bearings, bushings)
3	2	11036	Nut, Jam
4	1	11037	Bolt, Axle
5	2	11033	Washer, Pivot
6	1	11051	Tow Arm Assembly
7	1	11035	Bolt, Pivot
8	2	11010	Bushing, Flanged
9	4	11017	Bushing, Machined
10	1	11012	Spanner, Wheel
11	2	1017KP	Bushing, Bearing Retainer
12	1	11660	Bearing, Roller
13	1	11659	Bearing, Roller
14	2	11034	Zerk Fitting
15	2	1018	Bushing, Iron
16	1	1035	Kick Pin
17	1	12137	Universal Mounting Bracket Assembly
18	1	12138	Pin, Hitch
19	1	12139	Pin, Clevis
20	1	11031	Spanner, Pivot Tube
21	1	1020	Kit, Bolt (not shown)
24*	1		Foam Filled – Discontinued
25*	2	12260	Bearing, Tapered Cone
26*	2	12260 Set	Bearing, Tapered Cup
27*	2	12300	Spacer, High Speed
28*	2	12259	Grease Seal
29*	1	12301	Spacer, Reducer Bushing

*Note – Item 24-29 Discontinued